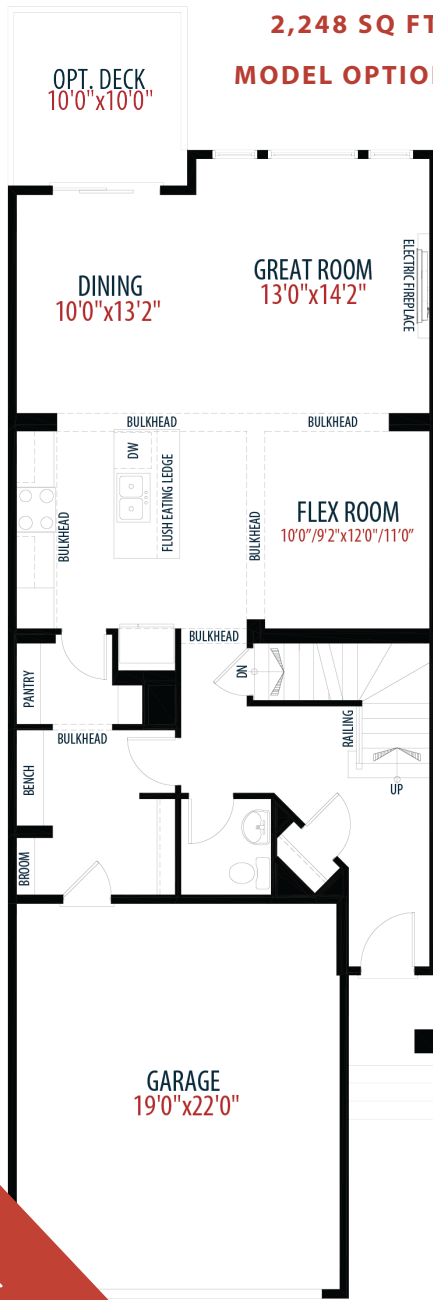


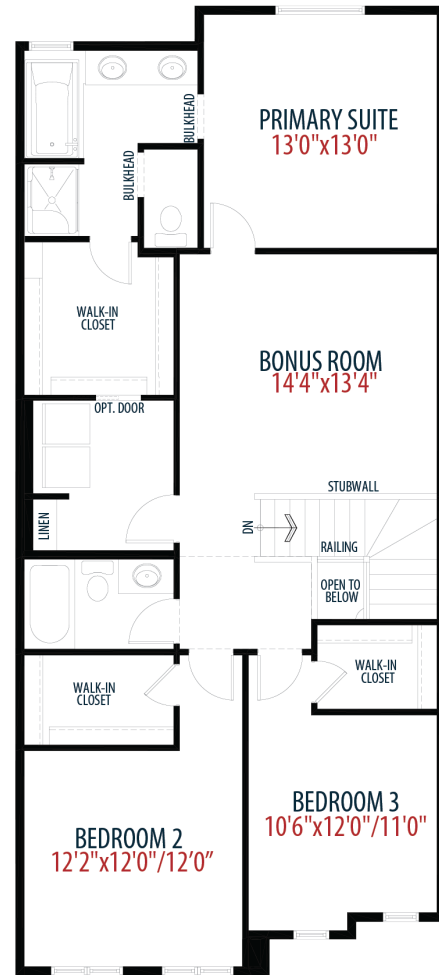
# THE CLIFFTON 'D'

2,248 SQ FT | 3 BEDROOM 2.5 BATH

MODEL OPTIONS: OPTIONAL UPPER FLOOR



Main Floor 1,011 sq ft



Upper Floor 1,237 sq ft

**NOW AVAILABLE**  
**\$782,447.00**

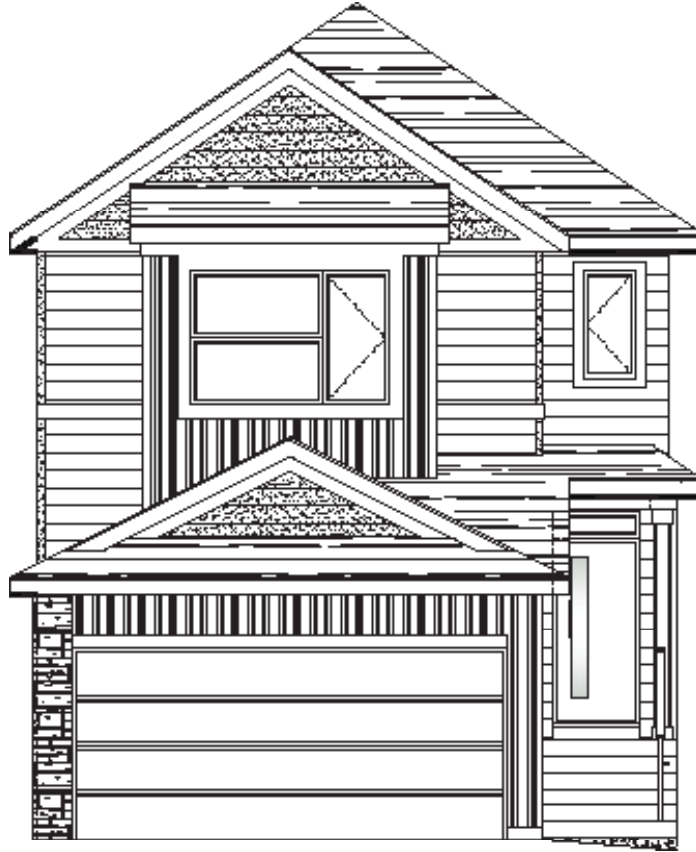


Proud to be named Calgary's Builder of the Year for 16 years.  
2001, 2002, 2003, 2004, 2005, 2006, 2007, 2008, 2009, 2010, 2013, 2014, 2018, 2020, 2021, 2022



# 192 WOLF RIVER DRIVE SE

POSSESSION: SPRING 2025



## MODEL HOME FEATURES INCLUDE:

- Gourmet kitchen with upgraded light quartz countertops with white cabinets to the ceiling
- Apron front kitchen sink with Champagne bronze faucet
- Plank flooring throughout main flooring with ceramic tile in mudroom & upperfloor bathroom's and laundry
- Built in 50" electric fireplace with oak stained mantel
- 10'x10' Deck with gas line for BBQ
- Upgraded railing on stairs to upper floor
- Upgraded carpet throughout the upper floor
- Upgraded to black door & bathroom hardware package
- Quartz vanities with undermount sinks in upstairs bathrooms



## CONTACT

**AREA MANAGER**

Krista Warnes

587 327 7215

wolfwillow@morrisonhomes.ca

*Price subject to change. Elevation and colours may not be as shown.  
Please see Area Manager for details.*



WOLF WILLOW

MorrisonHomes.ca