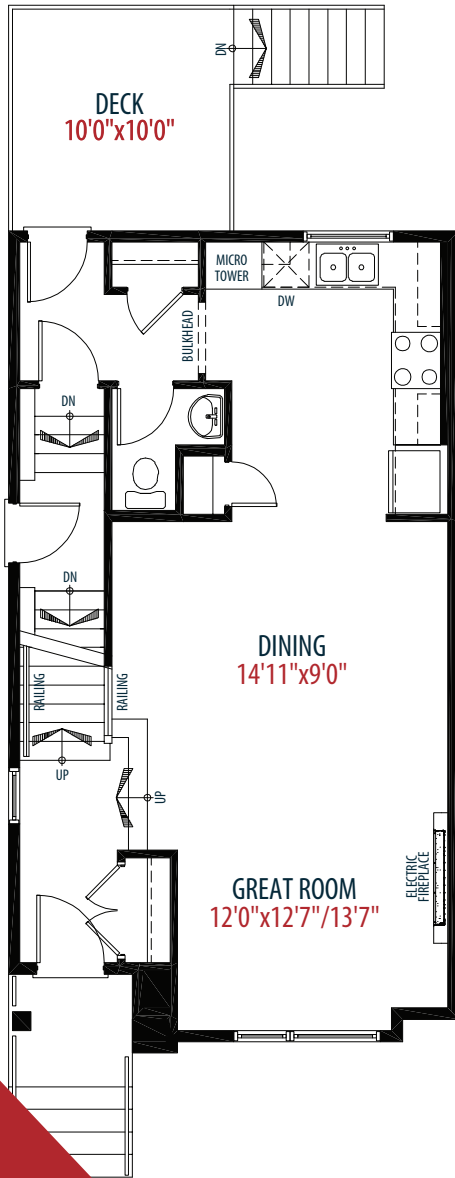


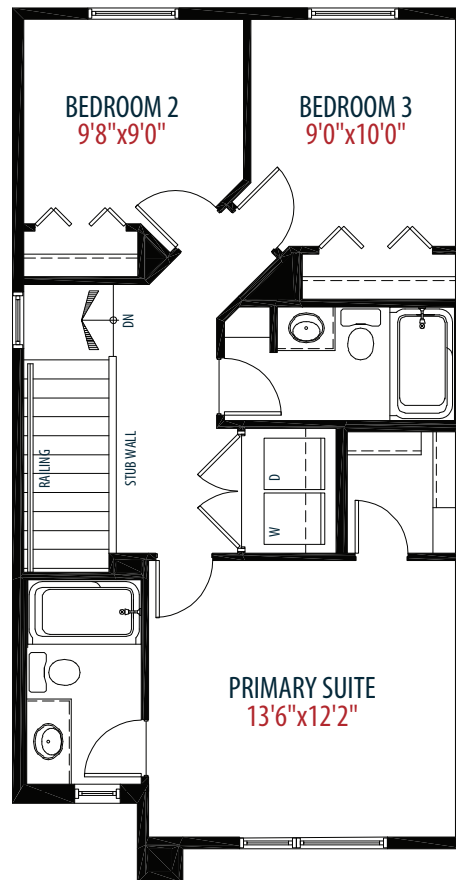
THE CADENCE

1,429 SQ FT | 3 BEDROOM 2.5 BATH

MODEL OPTIONS: OPTION C SIDE ENTRY



Main Floor 700 sq ft



Upper Floor 729 sq ft

NOW AVAILABLE
\$596,575.00



Proud to be named Calgary's Builder of the Year for 16 years.
2001, 2002, 2003, 2004, 2005, 2006, 2007, 2008, 2009, 2010, 2013, 2014, 2018, 2020, 2021, 2022



28 MITCHELL WAY NW

POSSESSION: SUMMER 2026



MODEL HOME FEATURES INCLUDE:

- Gourmet Kitchen
- Cabinets to ceiling
- Upgraded flooring
- Electric fireplace
- Sunshine lot
- Deck and stairs to grade with gas line for BBQ



CONTACT

AREA MANAGER

Michelle Doucet
825 509 1661

michelle.doucet@morrisonhomes.ca



Price subject to change. Elevation and colours may not be as shown.
Please see Area Manager for details.

MorrisonHomes.ca